

PRODUCT GUIDE

CIMON

SCADA | IPC | HMI | PLC



Automate Smarter.

ABOUT US

Since its establishment in 1999, CIMON has been at the forefront of the industrial automation revolution. Making its mark by developing an award-winning SCADA software product, CIMON quickly gained recognition throughout Asian and European markets. By expanding into PLC, HMI, and Industrial PC hardware development, our reach expanded globally with powerful partnerships in India, Germany, South America, and the U.S.

Our product offerings cater to every industry, including food and beverage, packaging, pharmaceuticals, oil and gas, automotive, chemical processing, water systems, mining, building automation, aerospace, and more. Developing both our own hardware and software in-house, combined with our U.S.-based R&D department, means we can always assure the highest standards of quality while offering much shorter lead times, completely custom solutions, the most efficient brand labeling, and the ability to make modifications to suit any specific application. That's what makes working with CIMON the smarter choice.

CIMON



INDEX

SCADA

UltimateAccess	02
UltimateAccess Web	04

IPC

Panel IPC	06
Box IPC	10

HMI

Xpanel nXT	12
Xpanel eXT	14
Canvas HMI Software	16
Xpanel Hybrid	18

PLC

Summary	20
CM1 Series	22
CM3 Series PLC-S	28
EtherCAT Remote I/O	32
Micro-S	34

GLOBAL NETWORK	38
----------------	----

CUSTOMERS	40
-----------	----



ULTIMATE ACCESS

SCADA SOFTWARE



UltimateAccess provides all the necessary tools to develop various industrial applications for desktops, industrial displays, and mobile devices. It includes a comprehensive symbol library, straightforward data-binding, and robust drawing and scripting tools, all within a single, fully integrated development environment.

SCADA SOFTWARE



DATA ANALYSIS

Survey raw data to reveal trends and derive valuable understandings, leading to well-informed choices, enhanced user experience, and more efficient operations.



SYMBOL FACTORY

Thousands of graphics for various industries.



REDUNDANCY

Simplify the implementation of fault tolerance for critical systems by incorporating redundant servers.



MULTI-MONITOR

Expand the functional scope of any application by displaying multiple screens simultaneously.



DYNAMIC REPORTING

Produce tailored spreadsheets filled with comprehensive data for distribution to any destination.



INDUSTRIAL HISTORIAN

Convert a SQL database into an efficient time-series tag historian with high-performance capabilities.



COMMUNICATION DRIVERS

Supports over 400 industry-standard protocols, such as EtherNet/IP, S7, OPC UA, Modbus, and BACnet.



AUTONOMOUS BEHAVIOR

Enable any application action or process autonomously with the integrated script engine.

DEVELOPMENT LICENSE

Product #	UA01-0075/DS	UA01-0150/DS	UA01-0500/DS	UA01-1500/DS	UA01-3000/DS	UA01-FULL/DS
Tags	75	150	500	1500	3000	Unlimited
Description	Development + Runtime Viewer					

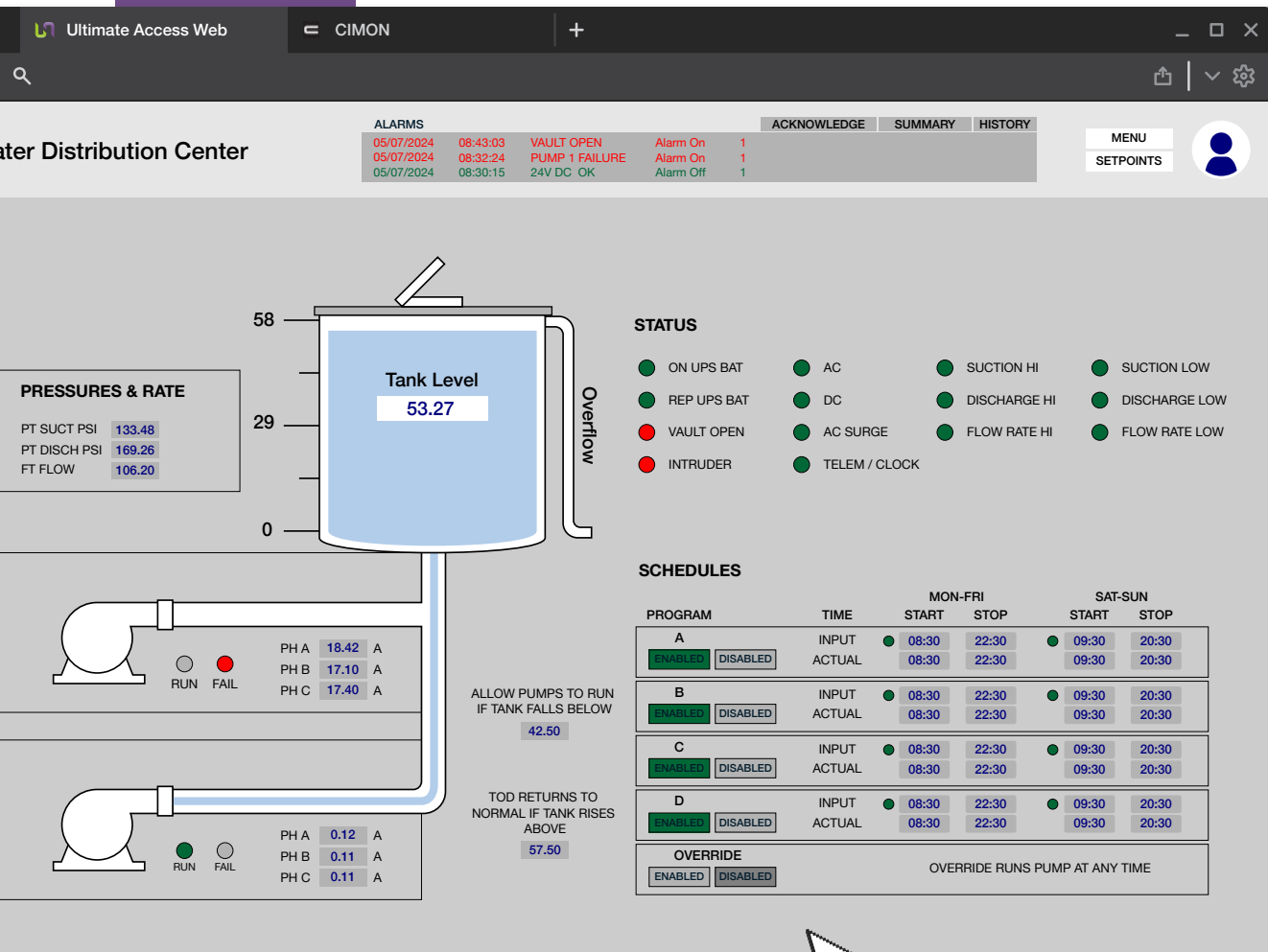
RUNTIME LICENSE

Product #	CM01-0075/RS	CM01-0150/RS	CM01-0500/RS	CM01-1500/RS	CM01-3000/RS	CM01-FULL/RS
Tags	75	150	500	1500	3000	Unlimited
Description	Runtime Viewer					

*The Ultimate IPC + SCADA Bundle is also available.

ULTIMATE ACCESS WEB

SCADA SOFTWARE



UltimateAccess Web is web-based server software that serves as a central hub, integrating all operations on your plant floor. It communicates with any plant-floor equipment, regardless of brand, model, or platform, as effortlessly as it interacts with SQL databases and TimeScaleDB. This seamless integration effectively connects production with IT systems, ensuring complete system integration.

SCADA SOFTWARE



HTML5 WEB-BASED DEPLOYMENT

Attain access to your control system via PCs, smartphones, and tablets.



INDUSTRIAL HISTORIAN

Accelerate past traditional Microsoft-based SQL software to maintain critical data with the embedded PostgreSQL and TimeScaleDB time-series historians.



3D MODELING

Support multi-axis rotation of 3DB, OBJ, STL, and GLB file types.



PICTORIAL CHARTS

Convey complex data in a visually appealing and easy-to-understand format.



PAGE RECORDER

Monitor every point of interest during an alarm event to enable playback and facilitate troubleshooting processes.



SYMBOL FACTORY

Thousands of SVG graphics for various industries.



AUDIT TRAIL

Ensure electronic records and signatures' integrity, security, and reliability in regulated industries with 21 CFR Part 11 compliance.



COMMUNICATION DRIVERS

Supports over 400 industry-standard protocols, such as EtherNet/IP, S7, OPC UA, Modbus, and BACnet.



AUTONOMOUS BEHAVIOR

Enable any application action or process autonomously with the integrated script engine.



ENHANCED SURVEILLANCE

Integrate IP cameras with RTSP for superior video clarity, remote accessibility, and flexible installation options.

DEVELOPMENT LICENSE

Product #	UA02-0075/DS	UA02-0150/DS	UA02-0500/DS	UA02-1500/DS	UA02-3000/DS	UA02-FULL/DS
Tags	75	150	500	1500	3000	Unlimited
Description	HTML 5 based Web Server + Development + Runtime Viewer					

RUNTIME LICENSE

Product #	UA02-0075/RS	UA02-0150/RS	UA02-0500/RS	UA02-1500/RS	UA02-3000/RS	UA02-FULL/RS
Tags	75	150	500	1500	3000	Unlimited
Description	HTML 5 based Web Server + Runtime Viewer					

INDUSTRIAL PANEL PC



CIMON Industrial Panel PCs solve the most demanding automation challenges while maintaining high performance in harsh environments found within manufacturing and processing control. Our Industrial Panel PCs have touch screens and customizable RAM, storage, processors, and operating systems. These robust industrial computers support Windows-based software and advanced SCADA software like CIMON's UltimateAccess Web, Rockwell's FactoryTalk View, and Ignition. This versatility offers various configuration options to meet your specific needs.

INDUSTRIAL COMPUTER



FANLESS

Silent operation, improved reliability, reduced maintenance requirements, and better dust and other contaminants resistance.



DISK DRIVE PRESERVATION

UWF and EWF protect the integrity of system volume and RAM against unauthorized write operations, improving lifespan and reliability.



SYSTEM INTEGRITY

RAID 1 protocol mirrors information onto a separate disk for fault tolerance.



CPU LINEUP

Enhance efficiency with a fast Intel processor, such as the J1900, i3-6100U, or i5-6300U.



CUSTOMIZABLE

Deployable with or without an operating system, supporting Windows or Linux, and varying RAM and SSD storage configurations.



FLEXIBLE INTERFACING

Includes 2 x Gigabit Ethernet, along with up to 4 x serial channels and up to 4 x USB 3.0 ports.



INDUSTRIAL ROBUSTNESS

FCC, CE, UL, cUL, KC, IP65, NEMA 4X.



SCREEN SIZE LINEUP

Available in 10", 12", 15", or 19" sizes to suit various applications.



PANEL IPC		CM-INP400 SERIES						
Product #	CM-INP411-A	CM-INP411-D	CM-INP412-A	CM-INP412-D	CM-INP415-A	CM-INP415-D	CM-INP419-A	CM-INP419-D
CPU	Intel Celeron J1900							
OS	Windows 10 IoT Enterprise							
Display Size	10.4"		12.1"		15.0"		19.0"	
Resolution	1024×768 (4:3)				1280×1024 (5:4)			
Touch Screen	Resistive Single Touch							
Storage	250 GB SSD							
RAM	8 GB							
Input Voltage	100–240 VAC	24 VDC	100–240 VAC	24 VDC	100–240 VAC	24 VDC	100–240 VAC	24 VDC
LAN	2 × Gigabit Ethernet (RJ45)							
Serial	1 × RS232/422/485 (DB9M), 1 × RS232 (DB9M)		1 × RS232/422/485 (DB9M), 2 × RS232 (DB92M), 1 × RS422/485					
USB	2 × USB 2.0 (Type-A), 1 × USB 3.0 (Type-A)				3 × USB 2.0 (Type-A), 1 × USB 3.0 (Type-A)			
Video Output	1 × VGA, 1 × DVI-D							
Audio	1 × Line In, 1 × Line Out							
Optional Add-ons	500 GB/1 TB SSD; Windows 10 Pro/Linux Ubuntu; XpanelDesigner runtime license available.							

PANEL IPC		CM-INP3000/5000 SERIES						
Product #	CM-NP3612-A	CM-NP3612-D	CM-NP3615-A	CM-NP3615-D	CM-NP5615-A	CM-NP5615-D	CM-INP5619-A	CM-INP5619-D
CPU	Intel Core i3-6100U				Intel Core i5-6300U			
OS	Windows 10 IoT Enterprise							
Display Size	12.1"		15.0"		15.0"		19.0"	
Resolution	1024×768 (4:3)				1280×1024 (5:4)			
Touch Screen	Resistive Single Touch							
Storage	250 GB SSD							
RAM	8 GB							
Input Voltage	100–240 VAC	24 VDC	100–240 VAC	24 VDC	100–240 VAC	24 VDC	100–240 VAC	24 VDC
LAN	2 × Gigabit Ethernet (RJ45)							
Serial	1 × RS232/422/485 (DB9M), 2 × RS232 (DB9M)		1 × RS232/422/485 (DB9M), 2 × RS232 (DB92M), 1 × RS422/485					
USB	4 × USB 3.0 (Type-A)						1 × USB 2.0 (Type-A), 4 × USB 3.0 (Type-A)	
Video Output	1 × HDMI, 1 × DP							
Audio	1 × Line Out							
Optional Storage	500 GB/1 TB SSD						RAID 1 250/500 GB/1 TB SSD	
Optional Add-ons	16/32 GB RAM; Windows 10 Pro/Linux Ubuntu; XpanelDesigner runtime license; Spare clips and a replacement Bezel available.							

INDUSTRIAL BOX PC



CIMON Industrial Box PCs solve the most demanding automation challenges while maintaining high performance in harsh environments found within manufacturing and processing settings. Our Industrial Box PCs are compact, DIN rail mountable, Wi-Fi/Bluetooth capable, and have customizable RAM, storage, processors, and operating systems. These robust industrial computers are ThinManager Client compatible and support Windows software and advanced SCADA software like CIMON's UltimateAccess Web, Rockwell's FactoryTalk View, and Ignition. This versatility offers various configuration options to meet your specific needs.

INDUSTRIAL COMPUTER



FANLESS

Silent operation, improved reliability, reduced maintenance requirements, and better dust and other contaminants resistance.



THINMANAGER CLIENT COMPATIBLE

Centrally manage and distribute applications to thin clients, enhancing efficiency, security, and flexibility.



WIRELESS CONNECTIVITY

Equipped with Wi-Fi and Bluetooth, improves any application's versatility, scalability, and speed.



INDUSTRIAL ROBUSTNESS

FCC, CE, UL, cUL, KC.



CUSTOMIZABLE

Deployable with or without an operating system, supporting Windows or Linux, and varying RAM and SSD storage configurations.



FLEXIBLE INTERFACING

Includes 2 x Gigabit Ethernet, along with up to 4 x serial channels and up to 4 x USB 3.0 ports.



INSTALLATION

Capable of DIN rail mounting, offering space optimization, modularity, and enhanced safety.



CPU LINEUP

Intel J3455, i3-1115G4E, i5-1145G7E, or i7-1185G7E.

BOX IPC	CM-NB200 SERIES		CM-NB SERIES	
Product #	CM-NB200-D	CM-NB3011-D	CM-NB5011-D	CM-NB7011-D
CPU	Intel Celeron J3455	Intel Core i3-1115G4E	Intel Core i5-1145G7E	Intel Core i7-1185G7E
OS	Windows 10 IoT Enterprise			
Storage	250 GB SSD			
RAM	8 GB			
Input Voltage	24 VDC			
LAN	2 x Gigabit Ethernet (RJ45)			
Serial	1 x RS232/422/485 (DB9M), 1 x RS232 (DB9M)	1 x RS232/422/485 (DB9M)		
USB	2 x USB 2.0 (Type-A), 2 x USB 3.0 (Type-A)	4 x USB 3.0 (Type-A)		
Video Output	2 x HDMI		1 x HDMI, 1 x DP	
Optional Add-ons	500 GB/1TB SSD; Windows 10/11 Pro/Linux Ubuntu; XpanelDesigner runtime license; DIN Rail bracket available.	16/32 GB RAM; 500 GB/1TB SSD; Windows 10/11 Pro/Linux Ubuntu; XpanelDesigner runtime license; WiFi + Bluetooth combo module; DIN Rail bracket available.		

X-PANEL · HMI nXT



CIMON's Xpanel human-machine interface (HMI) facilitates interaction between humans and machines. They undergo rigorous testing for high levels of shock, vibration, and temperature resilience. These devices operate efficiently in industrial environments and are packaged with many communication interfaces.

HUMAN-MACHINE INTERFACE



EXPLOSION-PROOF

Certified for Class 1 Division 2 areas. Ensures the safety of operators and environments where flammable gases, vapors, or combustible dusts might be present under abnormal conditions.



WIDE-RANGE TEMPERATURE

-20°C to 65°C (-4°F to 149°F). Integrate in the climate extremes.



HARSH OUTDOOR PROTECTION

UL Type 4X and 12 rated for optimal resistance to moisture, dust, and corrosion in harsh environments.



CANVAS SOFTWARE

Complimentary designer software used to program nXT and eXT Xpanels.



SUNLIGHT READABLE AND CAPACITIVE

Improved visibility, user experience, and versatility during daytime with direct sun. Multi-touch support, low power consumption, with bare minimum touch-pressure required.



IP68

ENHANCED INGRESS PROTECTION

IP68 rated. Enhanced dustproofing and waterproofing.



RIGIDITY

Full aluminum casting, providing durability, corrosion resistance, heat dissipation, and aesthetic appeal.



EDGE COMPUTING

This device is equipped with two Ethernet ports and is an excellent candidate for linking LAN data to the cloud.

nXT SERIES

Product #	CM-nXT07-D
Software	Canvas
OS	Embedded Linux
Display size	7.0"
Resolution	800×480 (5:3)
Touch Screen	Capacitive Multi Touch
Input Voltage	24 VDC
Front Bezel	Aluminum
LAN	2 × Gigabit Ethernet (RJ45)
Serial	1 × RS232 (DB9M), 1 × RS422/485 (DB9M)
USB	1 × USB 2.0 (Type-A)
SD Card Port	1 × Slot
Audio	1 × Line Out



XPANEL · HMI eXT



CIMON's Xpanel human-machine interfaces (HMI) facilitate interaction between humans and machines. They undergo rigorous testing for high levels of shock, vibration, and temperature resilience. These devices operate efficiently in industrial environments and are packaged with many communication interfaces.

HUMAN-MACHINE INTERFACE



HIGH-PERFORMANCE CPU

Enhances efficiency with a fast quad-core processor.



INDUSTRIAL ROBUSTNESS

FCC, CE, UL, cUL, KC, IP65, NEMA 4X, 12, 13.



FLEXIBLE INTERFACING

Includes 2 × Gigabit Ethernet, along with up to 3 × serial channels and up to 2 × USB 2.0 ports, and 1 × SD card slot.



CANVAS SOFTWARE

Complimentary designer software used to program nXT and eXT Xpanels.



RESISTIVE TOUCH SCREEN SIZE LINEUP

Available in 4", 7", 10", 12", or 15" sizes to suit various applications.



BACKLIGHT LIFE

Estimated 50,000 hours of usage from industrial-grade LCDs.



ENHANCED DISPLAY

Sharp XGA resolution display with up to 16.7M options in color.



EDGE COMPUTING

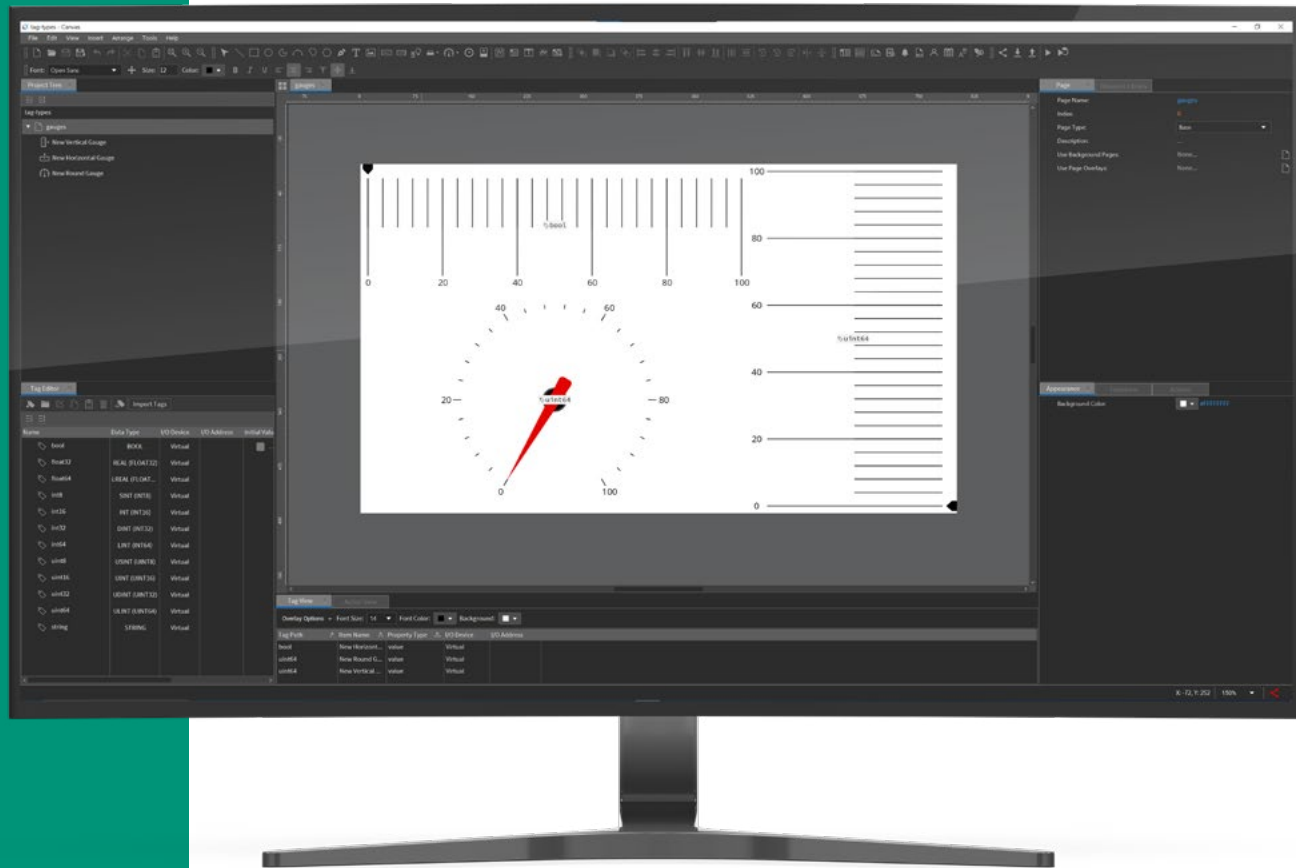
This device is equipped with two Ethernet ports and is an excellent candidate for linking LAN data to the cloud.

eXT SERIES					
Product #	CM-eXT04-D	CM-eXT07-D	CM-eXT10-H-D	CM-eXT12-H-D	CM-eXT15-D
Software	Canvas				
OS	Embedded Linux				
Display size	4.3"	7.0"	10.4"	12.1"	15.0"
Resolution	800×480 (5:3)		1024×768 (4:3)		
Touch Screen	Resistive Single Touch				
Input Voltage	24 VDC				
Front Bezel	Plastic		Aluminum		
LAN	1 × Gigabit Ethernet (RJ45)	2 × Gigabit Ethernet (RJ45)			
Serial	1 × RS232 (DB9M), 1 × RS422/485 (DB9M)		2 × RS232 (DB9M), 1 × RS422/485		
USB	1 × USB 2.0 (Type-A)		2 × USB 2.0 (Type-A)		
SD Card Port	-	1 × Slot			
Audio	-	1 × Line Out			



CANVAS

HMI SOFTWARE



A revolutionary HMI programming software designed for our new eXT and nXT series of Xpanel HMI displays. Boasting a sleek and modern appearance, this powerful and versatile platform simplifies the process of creating, editing, and managing HMI projects; making CIMON Canvas the perfect solution for industrial automation and many other process applications.

HUMAN-MACHINE INTERFACE



CLOUD CONNECTIVITY

Evolve any application with cloud-based connectivity protocols such as OPC UA or MQTT.



SYMBOL FACTORY

Thousands of graphics for various industries. SVG, GIF, PNG, JPG, and BMP support.



COMMUNICATION DRIVERS

Supports a wide range of industry-standard protocols, including EtherNet/IP, S7, and Modbus.



360° OBJECT ROTATION

Dynamically change any object's rotational orientation within Canvas without third-party programs' assistance.



SMART-BINDING

Drag-and-drop tags into objects for intuitive allocation to properties.



MULTI-LANGUAGE

Translate any language with the accompanying font style.



SECURITY

Protect project intellectual property and integrate project runtime permissions.



AUDIT TRAIL

Ensure electronic records and signatures' integrity, security, and reliability in regulated industries with 21 CFR Part 11 compliance.



AUTONOMOUS BEHAVIOR

Enable any application action or process autonomously with the integrated Javascript script engine.



EMAIL NOTIFICATIONS

Receive alerts with applications via integrated SMTP, reducing the overall resources needed in the digital age.



MULTI-DEVICE DEPLOYMENT

Expedite the application distribution or update by downloading to multiple Xpanel HMIs simultaneously.



RECIPE

Store default application permutations or upload externally calibrated configurations to be saved for later use.



SIMULATION

Generate proof of concept for any application with the embedded simulator.



REMOTE PAGE CONTROL

Facilitate page change seamlessly from the control of an I/O device.

XPANEL HYBRID



CIMON's hybrid HMI and PLC unit combines the functionalities of both systems, allowing for seamless integration of control and monitoring capabilities. This integration lets users control machinery and processes directly from the HMI interface and its embedded I/O while reducing panel space. They can accommodate up to 94 I/O points with 1 Xpanel Hybrid option module and 2 CM3 expansion I/O modules and have built-in features, including Ethernet connectivity, high-speed counting (HSC), pulse-train output (PTO) motion control, and proportional-integral-derivative (PID).



SIMPLE MODULE EXPANSION

Expands with up to 2 PLC-S modules and 1 Xpanel Hybrid option module, capable of up to 94 I/O.



EMBEDDED I/O AND FLEXIBLE INTERFACING

8 × discrete inputs and up to 8 × discrete outputs. Includes 2 × 10/100 Ethernet, 3 × serial channels, 1 × USB 1.0 port, and 1 × SD card slot.



MOTION CONTROL

Generate speeds up to 100 kHz of pulse train output.



INDUSTRIAL ROBUSTNESS

FCC, CE, UL, cUL, KC, IP65, NEMA 4X.



HIGH-SPEED COUNTING

Interface with encoders to count pulses at extreme speeds up to 20 kHz.



PID

Calibrate any application apparatus to achieve a steady state using calculus-based algorithms.

HYBRID HMI	XPANEL SHP SERIES		
Product #	CM-sHP07CD-DC	CM-sHP07CD-DT	CM-sHP07CD-DR
Software	XpanelDesigner (HMI), CICON (PLC)		
Display size	7.0"		
Resolution	800x480 (5:3)		
Touch Screen	Resistive Single Touch		
LAN	HMI: 1 × 10/100 Ethernet (RJ45), PLC: 1 × 10/100 Ethernet (RJ45)		
Serial	HMI: 1 × RS232/422/485 (DB9M), PLC: 1 × RS232, 1 × RS422/485		
USB	1 × Port		
SD Card Port	1 × Slot		
Audio	1 × Line Out		
Discrete Input	8 Sink/Source, 12/24 VDC		
Discrete Output	7 Source, 12/24 VDC, 0.2A/pt	7 Sink, 24 VDC, 0.2A/pt	8 Relay, 24 VDC/240 VAC, 2.0A/pt

ACCESSORIES	DESCRIPTION
CM-HP-DM	Expansion dummy for Hybrid
CM-HP-EAA	Analog Module for Hybrid (AI 2 Ch, AO 2 Ch)
CM-HP-EDR	Digital Module for Hybrid (DI 8 points, DO 6 points Relay)

CIMON PLC



CIMON offers the most reliable and cost-effective controllers for a wide range of automation systems. Our PLC lineup is comprised of the UP Series, XP Series, CP Series, PLC-S Series, and Micro-S Series to accommodate a vast variety of applications.

FAMILY	CM1 UP	CM1 XP	CM1 CP	CM3 PLC-S	CM3 PLC-S PRO	MICRO-S
Software	CICON					
Expandable	●	●	●	●	●	○
I/O Count	Over 13,000	Up to 8,192	Up to 1,536	Up to 384	Up to 352	Up to 36
CPU Embedded I/O	○	○	○	●	○	●
Processing Speed (ns/step)	~54	~497	~525	~805	~74	~805
Storage (steps)	256k	128k	64k	10k	128k	10k
Mounting Type	Chassis			DIN Rail		
EtherCAT Positioning/ Motion Control	●	●	●	○	○	○
Modbus TCP/RTU	●	●	●	●	●	●
User Protocol TCP/RTU	●	●	●	●	●	●
BACnet	●	●	●	○	○	○
Ladder Diagram	●	●	●	●	●	●
Function Block	●	●	●	●	●	●
Sequential Function Chart	●	●	●	●	●	●
Instruction List	●	●	●	●	●	●
Structured Text	●	○	○	○	●	○
Analog I/O	●	●	●	●	●	●
Digital I/O	●	●	●	●	●	●
RTD	●	●	●	●	●	○
TC	●	●	●	●	●	○
Thermistor	●	●	●	○	○	○
Load Cell	●	●	●	○	○	○
High-Speed Counting	●	●	●	●	●	●
Pulse Train Output	●	●	●	●	●	●
Pulse Width Modulation	○	○	○	●	●	○
Serial Support	●	●	●	●	●	●
Ethernet Support	●	●	●	●	●	●
Redundancy Support	○	●	○	○	○	○
Data Logging Support	●	●	●	○	○	○

MODULAR PLC CM1



CIMON's CM1 modular PLC are tailored for large, robust machine control and remote automation tasks, offering versatile communication and I/O functionalities. They can accommodate over 13,000 I/O points with CM1 expansion I/O modules and have industry-desired features, including Ethernet connectivity, Modbus, redundancy, high-speed counting (HSC), pulse-train output (PTO) and EtherCAT motion control, and proportional-integral-derivative (PID).



ETHERCAT MOTION CONTROL

Interface with drives that communicate over the widely-used protocol EtherCAT, up to 8 axes.



REDUNDANCY

Simplify the implementation of fault tolerance for critical systems by incorporating redundant CPUs, I/O, and/or power supplies.



SIMPLE MODULE EXPANSION

Expandable over 8,000 I/O, ideal for large applications.



CICON SOFTWARE

Complimentary programming software used to program CM1 and CM3 PLCs.



PID

Calibrate any application apparatus to achieve a steady state using calculus-based algorithms.



COMMUNICATION DRIVERS

Supports Modbus RTU/TCP, User Protocol RTU/TCP, CIMON protocol, DNP 3.0, and BACnet.



HIGH-PERFORMANCE CPU

Scan arithmetic instructions, contacts, and coils in under 100 nanoseconds.



HISTORIAN

Store application raw data with data logging to stay informed about operations.



CPU MODULE					
Product #	CM1-UP1F	CM1-UP2F	CM1-UP3F	CM1-CP3E	CM1-CP4F
Type	Ultra High-Speed CPU			CPU + Communication	
Software	CICON				
Storage (steps)	Up to 256k	Up to 128k	Up to 64k	Up to 64k	Up to 16k
I/O Count	Over 13,000	8,192	4,096	1,536	384
Structured Text	●	●	●	○	○
User Memory	7 MB			512 KB	256 KB
LAN	2 × Gigabit Ethernet (RJ45)			1 × 10 Mbps Ethernet (RJ45)	-
Serial	1 × RS232				

REDUNDANCY CONFIGURATION	TYPE	DESCRIPTION
CM1-XP1S	CPU	7 MB User Memory, up to 8192 I/O, 1 × USB mini-B, 1 × RS232
CM1-RC10A	Communication	Redundancy Communication Module, 100 Mbps, 100 m.
CM1-SPR	Power	Power Redundancy Module, I: 100–240 VAC, O: 5/±15/24 VDC.
CM1-RPW	Power Monitoring	Displays Status of CM1-SPR, I: 24 VDC, O: 24 VDC (Sink).
CM1-EP03A	Expansion	Expansion module, 3 × 10 Mbps Ethernet (RJ45)
CM1-BS05S	Chassis	5 I/O module slots, dual power capability
CM1-BS08S	Chassis	8 I/O module slots, dual power capability
CM1-BS10S	Chassis	10 I/O module slots, dual power capability

DIGITAL I/O MODULE										
Product #	CM1-XD16E	CM1-XD32E	CM1-XD64E	CM1-YR16E	CM1-YT16E	CM1-YT16F	CM1-YT32E	CM1-YT32F	CM1-YT64E	CM1-XY16E
Type	Discrete Input			Discrete Output			Discrete Output			Discrete Combo
Input	16 Sink/Source 24 VDC	32 Sink/Source 24 VDC	64 Sink/Source 24 VDC	-			-			8 Sink/Source 24 VDC
Output	-			16 Relay 24 VDC/240 VAC, 2.0A/pt	16 Sink 24 VDC, 0.5A/pt	16 Source 24 VDC, 0.5A/pt	32 Sink 24 VDC, 0.2A/pt	32 Source 24 VDC, 0.2A/pt	64 Sink 24 VDC, 0.2A/pt	8 Relay 24 VDC/240 VAC, 2.0A/pt

COMMUNICATION MODULE										
Product #	CM1-SC02A	CM1-SC02C	CM1-SC01DNP	CM1-EC01A	CM1-EC10A	CM1-EC10B	CM1-EC10C	CM1-EC01DNP	CM1-EC04DNP	CM1-BN01A
Type	Serial			Ethernet	Ethernet					
Interface(s)	1 × RS232 (DB9M) 1 × RS422/485	2 × RS232 (DB9M)		1 × RS232 (DB9M)	1 × RJ45 10 Mbps	1 × RJ45 100 Mbps	1 × Fiber Optic 100 Mbps	1 × RJ45 100 Mbps	1 × RJ45 10 Mbps	
Output	User Protocol RTU, Modbus Master/Slave RTU, PLC Link			DNP 3.0	User Protocol TCP/UDP, Modbus Slave TCP, PLC Link	User Protocol TCP/UDP, Modbus Master/Slave TCP, PLC Link		Modbus Slave TCP	DNP 3.0 Single Host	DNP 3.0 4 Hosts

ANALOG I/O MODULE						
Product #	CM1-AD04VI	CM1-AD08V	CM1-AD08I	CM1-AD04W	CM1-AD08VI	CM1-AD16VI
Type	Analog Input					
Channels	4	8	8	4	8	16
Current	0-20 mA	-	0-20 mA	0-20 mA	0-20 mA	0-20 mA
Voltage	±10 V	±10 V	-	±10 V	±10 V	±10 V
Resolution	14-bit			16-bit	14-bit	

ANALOG I/O MODULE						
Product #	CM1-DA04VA	CM1-DA08V	CM1-DA08VA	CM1-DA04I	CM1-DA04V	CM1-DA08I
Type	Analog Output					
Channels	4	8	8	4	4	8
Current	-			4-20 mA	-	4-20 mA
Voltage	0-10V	±10 V	0-10V	-	±10 V	-
Resolution	14-bit					

RTD & TC MODULE				
Product #	CM1-RD04A	CM1-RD04B	CM1-TC04A	CM1-TH08A
Type	RTD		TC	Thermistor
Channels	4	4	4	8
Sensor	PT100/JPT100	PT1000	K, J, E, T, B, R, S, and N	NTC
Resolution	14-bit			

SPECIAL MODULE			
Product #	CM1-HS02C	CM1-HS02E	CM1-HS02F
Type	High-Speed Counter		
Channels	2		
Counting Speed	200 kHz	250 kHz	200 kHz
Encoder	5/12/24 VDC, Source	5 V, RS-422A, Line Drive	5/12/24 VDC, Sink
Notes	TB32M and SCB15IR required		

SPECIAL MODULE		
Product #	CM1-PS02A	CM1-PS08N
Type	Positioning	
Axes	2	8
Motion Control	Pulse-Train Output	EtherCAT
Interpolation	Linear, Circular	Linear, Circular, Helical
Output	Open Collector/Line Drive, 5/12/24 VDC	CAT 5 RJ45

SPECIAL MODULE	
Product #	CM1-LG02G
Type	Data Logger
Channels	2
Memory	2 GB
Performance	Data Logging/AUTO dump
LAN	1 × 10/100 Ethernet (RJ45)

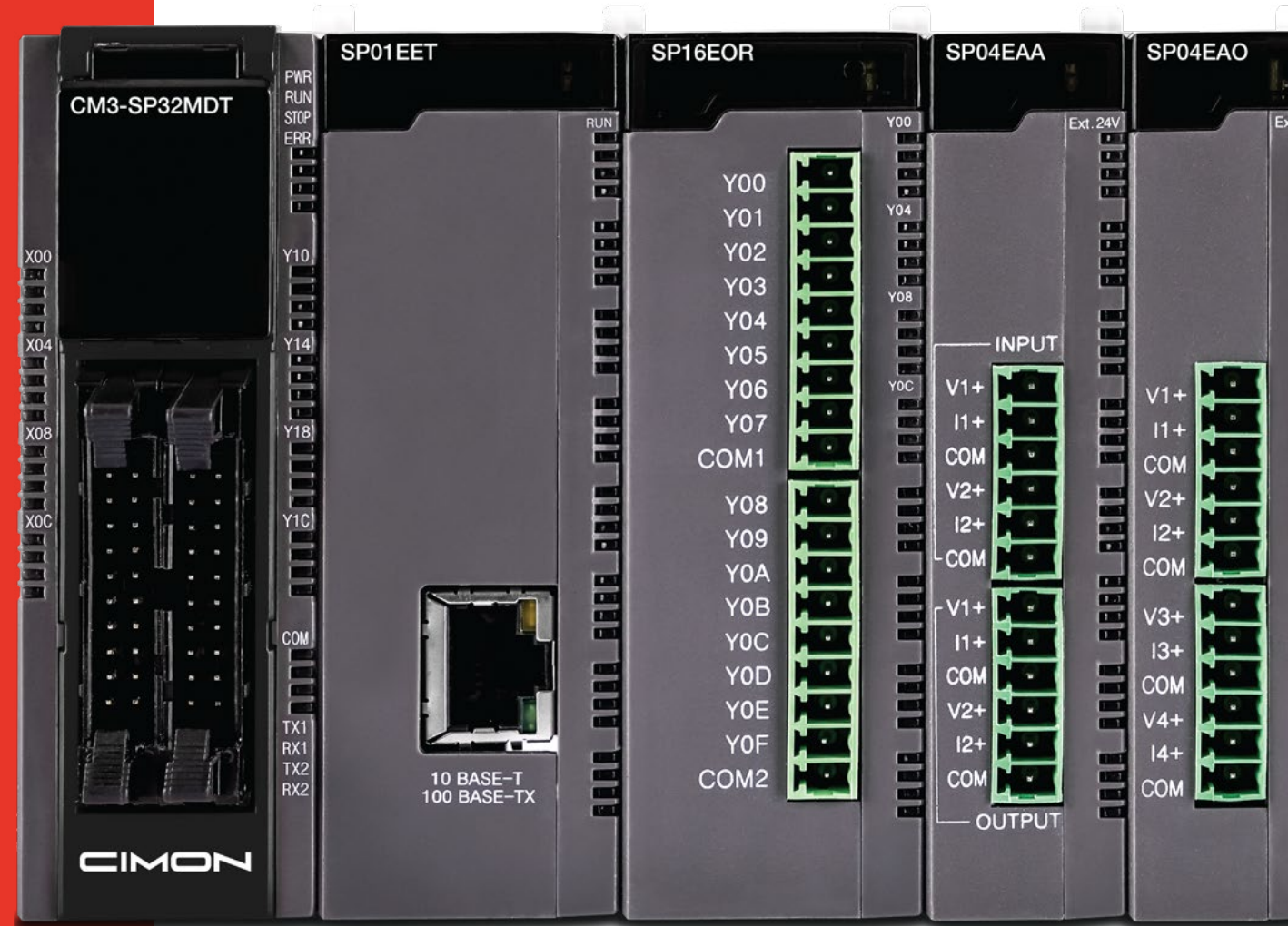
SPECIAL MODULE			
Product #	CM1-WG02C	CM1-WG02D	CM1-WG02E
Type	Load Cell		
Channels	2		
Sensor	Strain Gauge Method		
Performance	Standard	High Speed Weighing	Wide Range
Notes	TB32M and SCB15IR required		
Maximum Output	2.0 mV/V	2.0 mV/V	3.6 mV/V

POWER MODULE			
Product #	CM1-SPC	CM1-SP2B	CM1-SPW
Type	Power		
Input	100-240 VAC	24 VDC	70-110 VDC
Output	5/±15/24 VDC	5/±15 VDC	5/±15/24 VDC

EXPANSION MODULE	
Product #	CM1-EP02F
Type	Base Expansion
Port	2 × 10/100 Ethernet (RJ45)
Notes	CBE05/CBE10/CBE15 needed

BASE						
Product #	CM1-BS03A	CM1-BS04A	CM1-BS05A	CM1-BS08A	CM1-BS10A	CM1-BS12A
Type	Chassis					
I/O Modules Slot	3	4	5	8	10	12

MINI-MODULAR PLC PLC-S



CIMON's CM3 PLC-S mini-modular PLC are tailored for simple to medium complexity machine control and remote automation tasks, offering versatile communication and I/O functionalities. They can accommodate up to 384 I/O points with CM3 expansion I/O modules and have built-in features, including Ethernet connectivity, high-speed counting (HSC), pulse-train output (PTO) motion control, and proportional-integral-derivative (PID).

MINI MODULAR PLC



EMBEDDED I/O

Up to 16 discrete inputs and up to 16 discrete outputs.



COMPACT & EASY EXPANSION

Ultra-compact design with expandability up to 384 I/O, tailored for small to medium applications.



PID

Calibrate any application apparatus to achieve a steady state using calculus-based algorithms.



HIGH-SPEED COUNTING

Interface with encoders to count pulses at extreme speeds up to 20 kHz.



MOTION CONTROL

Generate speeds up to 100 kHz of pulse train output.



INSTALLATION

Capable of DIN rail mounting, offering space optimization, modularity, and enhanced safety.



CIMON SOFTWARE

Complimentary programming software used to program CM1 and CM3 PLCs.



COMMUNICATION DRIVERS

Supports Modbus RTU/TCP, User Protocol RTU/TCP, and CIMON protocol, with built-in Ethernet and serial ports in the CPU for versatile connectivity.



PLC CM3 SERIES

CPU MODULE						
Product #	CM3-SP32MDTF-SD	CM3-SP32MDCF-SD	CM3-SP16MDTF	CM3-SP16MDCF	CM3-SP16MDRF	CM3-SP16MDRV
Software	CICON					
Power	12/24 VDC, Expandable					
Discrete Input	16, Sink/Source, 12/24 VDC		8, Sink/Source, 12/24 VDC		8, Sink/Source, 12/24 VDC	
Discrete Output	16 Sink 12/24 VDC, 0.2A/pt	16 Source 12/24 VDC, 0.2A/pt	8 Sink 12/24 VDC, 0.2A/pt	8 Source 12/24 VDC, 0.2A/pt	6 Relay 24 VDC/240 VAC, 2.0A/pt	8 Relay 24 VDC/240 VAC, 2.0A/pt
LAN	1 × 10/100 Ethernet (RJ45)					-
Serial	1 × RS232, 1 × RS422/485					
SD/MMC Card	1 Slot		-			

DIGITAL I/O MODULE			
Product #	CM3-SP32EDO	CM3-SP32EDT	CM3-SP16EDR
Type	Discrete Input	Discrete Combo	
Input	32 Sink/Source 24 VDC	16 Sink/Source 24 VDC	8 Sink/Source 24 VDC
Output	-	16 Sink 12/24 VDC, 0.2A/pt	8 Relay 24 VDC/240 VAC, 2.0A/pt

PUSH-IN DIGITAL I/O MODULE					
Product #	CM3-SP32EDOP	CM3-SP32EDTP	CM3-SP32EDCP	CM3-SP32EOCP	CM3-SP32EOCP
Type	Discrete Input	Discrete Combo		Discrete Output	
Input	32 Sink/Source 24 VDC	16 Sink/Source 24 VDC	16 Sink/Source 24 VDC	-	
Output	-	16 Sink 12/24 VDC 0.2A/pt	16 Source 12/24 VDC 0.2A/pt	32 Sink 12/24 VDC 0.2A/pt	32 Source 12/24 VDC 0.2A/pt

COMMUNICATION MODULE			
Product #	CM3-SP02ERS	CM3-SP02ERR	CM3-SP01EET
Type	Serial		Ethernet
Interface(s)	1 × RS232 (DB9M) 1 × RS422/485	2 × RS232 (DB9M)	1 × RJ45 100 Mbps
Protocols	CIMON Protocol, User Protocol RTU, Modbus Master/Slave RTU		CIMON Protocol, User Protocol TCP, Modbus Master/Slave TCP

MINI MODULAR PLC

ANALOG I/O MODULE					
Product #	CM3-SP04EAO-A	CM3-SP08EAO-A	CM3-SP04EAA-A	CM3-SP04EOAI	CM3-SP04EOAV
Type	Analog Input		Analog Combo	Analog Output	
Channels	4	8	2 Input/2 Output	4	4
Current	0-20 mA	0-20 mA	0-20 mA I/O	0-20 mA	-
Voltage	±10 V	±10 V	±10 V I/O	-	±10 V
Resolution	14-bit		16-bit	14-bit	
Notes	External 24 VDC Required				

DIGITAL I/O MODULE				
Product #	CM3-SP32EOT	CM3-SP32EOC	CM3-SP16EOR	CM3-SP32PWM
Type	Discrete Output			Pulse-Width Modulation
Input	-			-
Output	32 Sink 12/24 VDC, 0.2A/pt	32 Source 12/24 VDC, 0.2A/pt	16 Relay 24 VDC/240 VAC, 2.0A/pt	32 Source 12/24 VDC, 0.2A/pt

RTD & TC MODULE		
Product #	CM3-SP04ERO-A	CM1-TH08A
Type	RTD	TC
Channels	4	4
Sensor	PT100/JPT100/ PT1000/NI1000	K, J, E, T, B, R, S, and N
Resolution	14-bit	

SPECIAL MODULE		
Product #	CM3-SP02HSC	CM3-SP02HSD
Type	High-Speed Counter	
Speed	200 kHz	250/500 kHz
Encoder	5/12/24 VDC Source	5/24 V, HTL/RS-422A Line Drive
Notes	TB32M and SCB15M required	

ETHERCAT Remote I/O



CIMON's EtherCAT Remote I/O solution assists with scalability, flexible network topology, integration, and cost-effectiveness. Increase your discrete and analog I/O count without compromising the application budget or engineering time.

MINI MODULAR PLC



SIMPLE

Remove the complication of learning new software or integrating separate CPUs into existing applications.



COMPATIBILITY

Generate an ESI file from CIMON's CICON software to communicate with any EtherCAT master.



VERSATILE I/O

Control any CIMON PLC-S discrete or analog module with an EtherCAT master.



COST EFFECTIVE

Increase profit margins with CIMON's competitive pricing.

REMOTE I/O MODULE	
Product #	CM3-ET10S
Type	EtherCAT Remote I/O
Power	12/24 VDC
LAN	2 × 10/100 Ethernet (RJ45)

TYPE	COMPATIBLE I/O MODULES
Discrete Input	CM3-SP32EDO
Discrete Output	CM3-SP32EOT, CM3-SP32EOC, CM3-SP16EOR
Discrete Combo	CM3-SP32EDT, CM3-SP16EDR
Push-In Discrete	CM3-SP32EDOP
Push-In Discrete	CM3-SP32EOTP, CM3-SP32EOCP
Push-In Discrete	CM3-SP32EDTP, CM3-SP32EDCP
Analog Input	CM3-SP04EAO-A
Analog Output	CM3-SP04EOAI, CM3-SP04EOAV
Analog Combo	CM3-SP04EAA-A
RTD & TC	CM3-SP04ERO-A, CM3-SP04ETO-A

BRICK PLC MICRO-S



CIMON's CM3 Micro-S brick PLCs are tailored for compact, standalone machine control and remote automation tasks, offering versatile communication and I/O functionalities. They can accommodate up to 36 I/O points and have built-in features, including Ethernet connectivity, high-speed counting (HSC), pulse-train output (PTO) motion control, proportional-integral-derivative (PID), and analog I/O support.



EMBEDDED I/O

Up to 16 discrete inputs, up to 16 discrete outputs, up to 2 analog inputs, and up to 2 analog outputs. Ideal for small applications.



COMPACT

Reduce cost and clutter in applications while offering aesthetic appeal.



PID

Calibrate any application apparatus to achieve a steady state using calculus-based algorithms.



HIGH-SPEED COUNTING

Interface with encoders to count pulses at extreme speeds up to 20 kHz.



INSTALLATION

Capable of DIN rail mounting, offering space optimization, modularity, and enhanced safety.



CIMON SOFTWARE

Complimentary programming software used to program CM1 and CM3 PLCs.



COMMUNICATION DRIVERS

Supports Modbus RTU/TCP, User Protocol RTU, and CIMON protocol, with built-in Ethernet and serial ports in the CPU for versatile connectivity.



MOTION CONTROL

Generate speeds up to 100 kHz of pulse train output.



SB16 SERIES		
Product #	CM3-SB16MDTF	CM3-SB16MDCF
Power	12/24 VDC, Non-expandable	
Discrete Input	8 Sink/Source, 12/24 VDC	
Discrete Output	8 Sink, 12/24 VDC, 0.2A/pt	8 Source, 12/24 VDC, 0.2A/pt
LAN	1 × 10/100 Ethernet (RJ45)	
Serial	1 × RS232, 1 × RS422/485	



SB32 SERIES			
Product #	CM3-SB32MDTF	CM3-SB32MDCF	CM3-SB32MDRF
Power	12/24 VDC, Non-expandable		
Discrete Input	16 Sink/Source, 12/24 VDC		
Discrete Output	16 Sink, 12/24 VDC, 0.2A/pt	16 Source, 12/24 VDC, 0.2A/pt	16 Relay, 24 VDC/240 VAC, 2.0A/pt
Analog Input	2 × Point, 0–10V, 0–20mA		
Analog Output	2 × Point, 0–10V, 4–20mA		
LAN	1 × 10/100 Ethernet (RJ45)		
Serial	1 × RS232, 1 × RS422/485		



CIMON

GLOBAL NETWORK

DISTRIBUTORS



AFRICA	EUROPE	MID-EAST	ASIA	OCEANIA	NORTH AMERICA	LATIN AMERICA					
Nigeria South Africa	Bosnia Bulgaria Czech Denmark Germany	Greece Hungary Lithuania Netherlands Poland	Portugal Serbia Ukraine	Israel Turkey	Korea Bangladesh China India Indonesia	Malaysia Mongolia Pakistan Phillipines Sri Lanka	Thailand Taiwan Vietnam	Australia	USA Canada	Argentina Brazil Bolivia Chile Colombia	Ecuador Mexico

CIMON

CUSTOMERS



WHAT OUR CLIENTS ARE SAYING

AMY RIZZO

Business Process Manager
Anheuser-Busch

They were available immediately for assistance and could be contacted at any point. They gave us all of the info we needed to get up and running and answered all of our questions!

MICHAEL BENNETT

Applications Engineer
B & D Industrial

Excellent Support. Very timely, helpful, and definitely allowed me to speed up my programming time.

GUNNAR E. FRANSEN

General Manager
ELMATECH Ltd.

CIMON automation system offers all aspects of electrical automation with modern high tech components, which make it easy for customers to make total solutions based on one system terminology. In particular, the PLC S-program has shown a strong competitiveness in the market. The constant development of new functions and modules combined with free and user-friendly programming software are strong factors in the market.

JOSE CUETO

President
Automatic Control Services, Inc.

The quality of the support has been 5 stars. The problem was fully understood and solved. The technical team is very knowledgeable and professional. The excellent quality of the technical support received reaffirms my confidence with the use and application of CIMON products. I am very grateful to you for your help.

YUVAL HAIM

Technical Engineer
GALUZ Electronics Ltd.

The total solution concept with one company is great. With CIMON, you can do complete project (PLC, SCADA, Xpanel) with one supplier.

BRANT SINGLETARY

Project Manager Water/Wastewater
Sundt Construction

I've worked with numerous PLC platforms in my career, none with the unparalleled product availability, customer service, reliability, and robustness of CIMON.

JABARI FARAMARZ

Sales Manager
MOBIN NIROO RAY Engineering Co.

CIMON SCADA offers a user-friendly interface and enables users to program a project and run a trial test offline without a license. CIMON does not need much configuration compared to other brands. Not to mention, it provides the ability to connect to most of PLC's available in the market. So standard automation engineers and developers can easily adapt to use and make applications of SCADA software.

HAYRI MUTLU

Product Manager
KON-TEK AUTOMATION Co.

CIMON PLC has many options for various communication ports and thus making communication very easier than other competitors. I can honestly say, CIMON PLC is the easiest product I have ever used for making communication. Besides, it offers redundancy system and numerous modules such as load cell, positioning and high speed counter.

CIMON.COM



Korea HQ

#1008 Signature Gwang-gyo 37, Poeun-daero 59, Suji-gu,
Yongin-si, Gyeonggi-do, 16864 Korea
+82-2-480-8601

USA HQ

2435 W Horizon Ridge Pkwy #100
Henderson, NV 89052
+1-800-300-9916
global@cimoninc.com